



14 & 15 MARCH 2024

# LABORAMA

BRUSSELS EXPO  
HALL 3

**Dear manufacturer and supplier of laboratory equipment,**

After a successful edition in 2023, we are all set for edition 2024! LABORAMA 2024 will take place on **Thursday 14 and Friday 15 March 2024 in Hall 3 of Brussels Expo.**

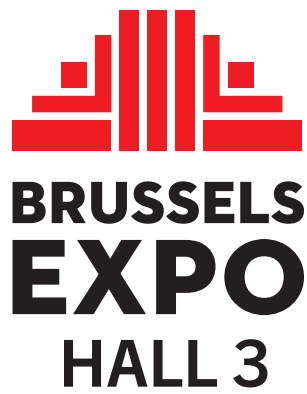
And we will continue the momentum of last year by offering, in partnership with the exhibitors, an extra programme to attract more and new visitors.

**What can you expect in addition to the trade fair?**

- The Laborama community: Scientific Sessions. Parallel to the trade fair, the Scientific Sessions will take place in the congress area in Hall 3. The congress is a cooperation between Laborama and its scientific committee chaired by Guy Dhondt.
- At the end of the 1st day of the trade fair, Laborama will organise a networking event for its exhibitors.

We look forward to welcoming you again to our trade fair.

## LOCATION



Hall 3 of Brussels Expo is ready for you!

The large open area, nice entrance and easy access make hall 3 a very suitable location to accommodate LABORAMA.

In addition, Brussels Expo is besides a very well-known exhibition complex, also excellently located near exit 7a on the ring road around Brussels. With its location on the Heyselvlakte, Brussels Expo is easily accessible by car as well as by public transport (metro, tram, bus).



## THE 2024 EDITION OFFERS

With every edition of LABORAMA we add new elements or place special accents to continue to improve the trade fair, where exhibitors present their latest technologies to visitors.

As organiser, we endeavour to continue to make LABORAMA the meeting point of the year, that is worth a visit for everyone active in the laboratory sector.

### What are the eye-catchers for the 2024 edition?

#### The Laborama Community: Scientific Sessions

During the fair, LABORAMA offers an interesting conference programme; focused on innovation and sustainability. Last year, we had the pleasure of welcoming the following speakers: Prof. Dr. ir. Eveline Peeters, Dr. Sabine Van Miert, Prof. Eva Lion, Prof. Dr. Ir. Damya Laoui, David Truyens, Stijn Baert, Wouter Christiaens, Christophe Devos, Dr. Thimo Groffen, Peter Vikegard. All of them were interesting and instructive lectures for which we are grateful.

Visitors and exhibitors who wish to attend one or more sessions can register in advance\* via the exhibition website [expo.laborama.be/en](https://expo.laborama.be/en).

Attendance at the congress is free of charge. The costs for the congress are assumed by Laborama.

\* registration is mandatory, if you wish to attend the sessions.



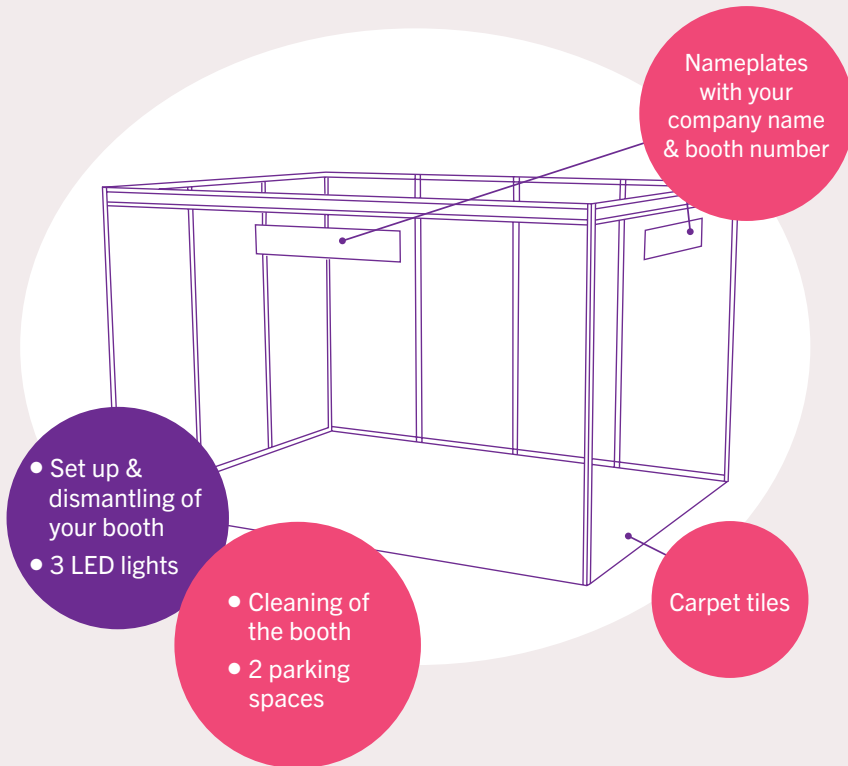
The Conference Room is situated in the front of Hall 3.

#### Recruiter and School Island

Besides the Scientific Sessions, Laborama will create a meeting place for recruitment agencies, schools and students during the upcoming edition. The aim is to encourage students to work in the sector, give companies the chance to meet end-of-year students and fill vacancies.

## MODULAR BOOTHS

Modular booths from a minimum of 12 to a maximum of 120 m<sup>2</sup>.



You can find the overview on the LABORAMA website

[www.expo.laborama.be/en](http://www.expo.laborama.be/en).

What supplementary orders do you have to place yourself? Furniture, electricity plus the equipment you wish to showcase in your booth.

- **Furniture:** can easily be ordered with our privileged supplier through the online exhibition manual.
- **Electricity:** you can easily order via the online exhibition manual (you order directly at Brussels Expo).

All exhibitors will have access as from November 2023.

## PARTICIPATION FEE

- The participation fee includes your booth as described in the chapter on modular stands.
- Minimum stand surface is 12m<sup>2</sup>. Maximum = 120m<sup>2</sup>.

Participation prices are\*:

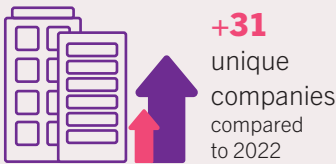
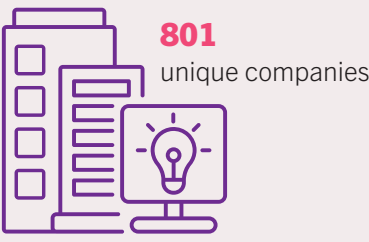
Surface	Price for members	Price for non-members
12m <sup>2</sup>	€ 2,780	€ 3,525
24m <sup>2</sup>	€ 5,560	€ 7,050
36m <sup>2</sup>	€ 8,340	€ 10,575
48m <sup>2</sup>	€ 11,120	€ 14,100
72m <sup>2</sup>	€ 16,680	€ 21,150
96m <sup>2</sup>	€ 22,240	€ 28,200
120m <sup>2</sup>	€ 27,800	€ 35,250

\* all above prices are VAT excluded

# STATISTICS

A select audience with projects.

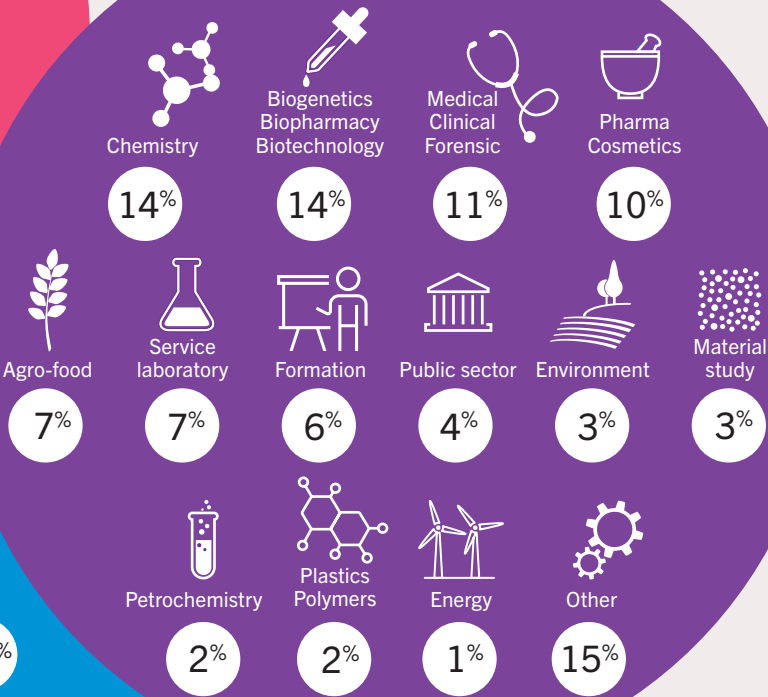
## LABORAMA 2023: 2 days



### DECISION MAKING



### INDUSTRY TYPE



### OBJECTIVES OF VISITORS





## Subscriptions are open!

You can now register via the online registration form at [expo.laborama.be](https://expo.laborama.be).

On our website you can also find all other practical information regarding the 24<sup>th</sup> edition of LABORAMA.



## FEDERATION

Laborama is the trade association for distributors and manufacturers of laboratory equipment and accessories.

Is your company active in this sector and you are not yet a member? Then perhaps this is the right time to join Laborama. Our members benefit from an attractive discount when participating at the trade fair and several additional services. When it comes to activities, members are also the first to be given the opportunity to register... But of course, there are many more advantages to the membership. Consult our website [www.laborama.be](http://www.laborama.be) for more information or contact our secretariat at [info@laborama.be](mailto:info@laborama.be).

Membership is open to companies established outside Belgium if they are active on the Belgian market.

In addition to the LABORAMA trade fair, Laborama, as a federation, is also the organiser of various other activities for the laboratory sector such as: the Laborama Quality Service Label, the LAB Automation Day, Labojobs and the Laborama e-Magazine.

Apply for your membership before 1 December and enjoy all the discounts members are entitled to during LABORAMA 2024.

**LABORAMA:**  
the meeting point  
for the  
laboratory sector







# Laborama

## PRACTICAL INFORMATION

### LABORAMA 2024

Brussels Expo – Hall 3

Avenue Impératrice Charlotte

1020 Brussels

### Access

- Entrance at the front (side of the Atomium)
- Parking lot B = exhibitors parking lot
- Free shuttle between entrance and parking lot C (for who parks here)

### Opening hours

Thursday March 14 2024 – 09:30 - 16:30

Friday March 15 2024 – 09:30 - 16:00

### Set Up

Wednesday March 13 – 12:00 - 22:00

Thursday March 14 – 07:00 - 09:00 (only finishing touches)

### Dismantling

Friday March 15 – 16:00 - 21:00

### Exhibition office – Laborama

13/03: 13:30 - 18:00

14/03: 9:30 - 12:30 and 13:30 - 16:30

15/03: 9:30 - 12:30 and 13:30 - 16:30

### LABORAMA VZW

Researchdreef 12

1070 Anderlecht

☎ +32 470 57 51 24

@ laborama@laborama.be

🌐 [www.expo.laborama.be](http://www.expo.laborama.be)

